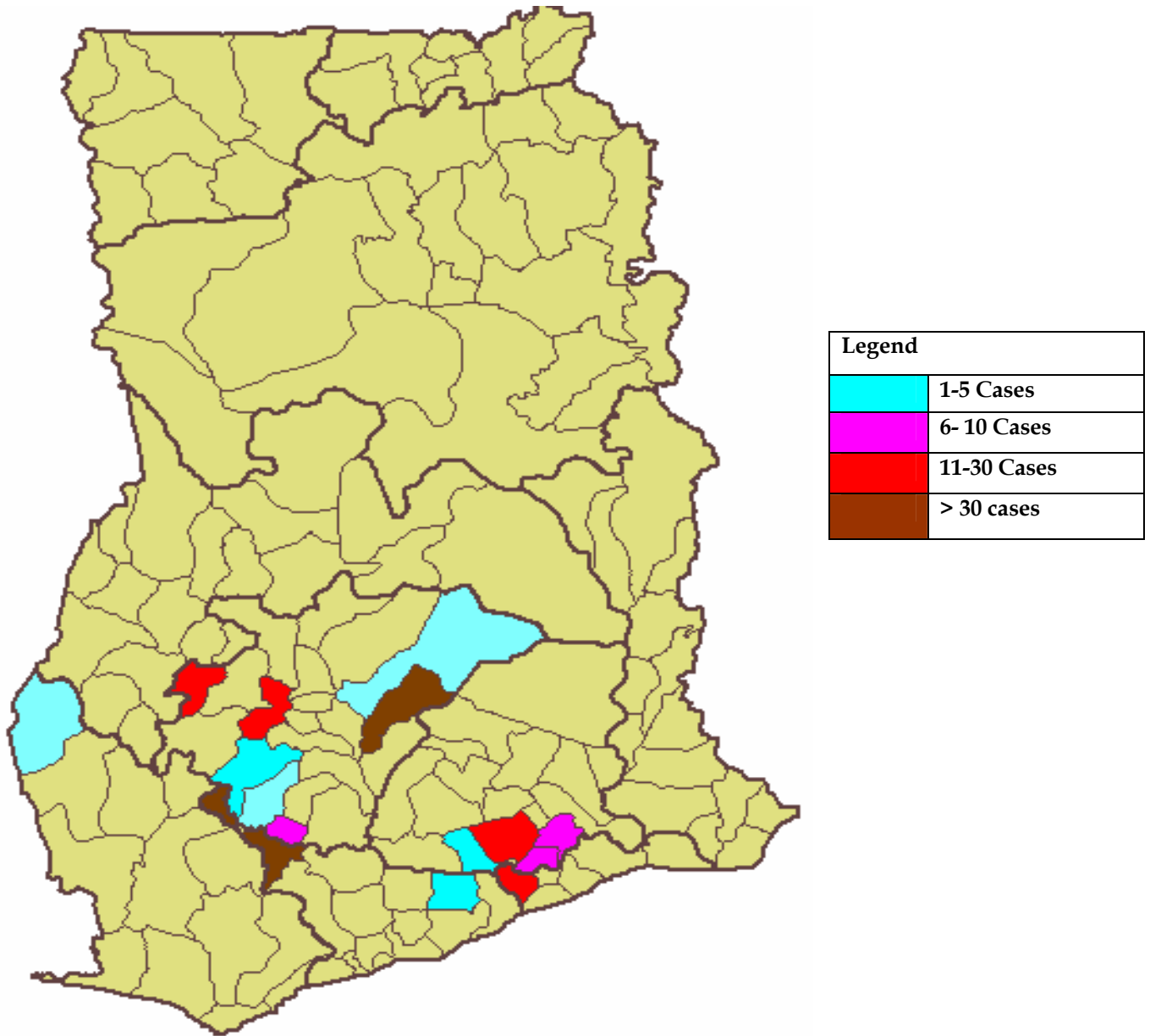


**Summary Feedback Report- Buruli Ulcer Control Programme
Jan- March 2008**

Indicator	Ashanti	Brong Ahafo	Central	Eastern	G. Accra	Western	National Total	
Date of receipt of reports	8 th April 2008	Not yet submitted	25 th April 2008	14 th April 2008	28 th April 2008	23 th April 2008		
Timely or late? (15 th April 2008)	Timely	Late	Late	Timely	Late	Late		
No of districts in region	21	18	13	17	6	13	88	
Number of endemic districts	17	7	4	9	2	6	55	
Number of districts submitting report	10	0	2	5	1	1	19	
Number of districts submitting nil reports	4	0	0	0	0	0	4	
No of received reports that are complete (#/%)	3 (30%)	0	2 (100%)	5 (100%)	1 (100%)	1 (100%)	9 75%	
Total number of districts reporting BU cases this quarter	7	0	2	5	1	1	17	
Number of districts reporting for the first time	1	0	0	1	0	0	2	
Number of previously known districts not reporting cases during the quarter	6	0	0	4	1	5	16	
Total no of new cases detected	73	0	47	30	14	2	166	
Total no of recurrent cases reported	4*	0	0	0	4*	1*	9*	
No of cases children <15 yrs of age (#/%)	44 (57.2%)	0	14 (29.8%)	9 (30%)	8 (57.1%)	0	75 (45.2%)	
No of cases detected with limitation of joint movement (#/%)	9 (11.7%)	0	1 (2.1%)	6 (20%)	4 (22.2%)	0	20 (12%)	
No of new non ulcerative cases (#/%)	32 (41.6%)	0	18 (38.3%)	6 (20%)	3 (21.4%)	0	59 (35.5%)	
No of new ulcerative cases (#/%)	45 (58.4%)	0	29 (61.7%)	24 (80%)	11 (78.6%)	2 (100%)	111 (66.9%)	
No of new cases specimen taken (#/%)	63 (81.8%)	0	25 (53.2%)	6 (20%)	0	0	94 (56.6%)	
# of Cases detected by	Self referral (#/%)	3 (3.9%)	0	10 (21.3%)	1 (3.3%)	-	-	14 (8.4%)
	Health Worker (#/%)	14 (18.2%)	0	5 (10.6%)	4 (13.3)	-	-	23 (13.9%)
	Community Volunteer (#/%)	25 (32.5%)	0	0	6 (20%)	-	-	21 (12.7%)
	Former Patient (#/%)	1 (1.3%)	0	0	0	-	-	1 (0.6%)
	School Teacher (#/%)	0	0	0	1 (3.3%)	-	-	1 (0.6%)
	Other (#/%)	0	0			-	-	

Reported Cases of Buruli Ulcer- Jan- March 2008



Narrative

Ashanti Region

a. Timeliness, Completeness and number of reports received

Regional Report was received on time (thus before 15th April 2008)

Nil reports were received from Ejura, Atwima Mponua and Amansie Central districts.

Atwima Nwabiagya used an old form which is no longer in use for February 08.

Endemic districts which did not submit reports were:

Afigya Sekyere ,Ahafo Ano South , Amansie West, Asante Akim South
Bosomtwi Atwima Kwanwonma, Ejisu Juaben, Kwabre, and Offinso

b. Communities Reporting

Indicator	Name of Community	No of cases	District
Communities Reporting BU for the 1 st time	Jimiso	1	Obuasi Municipal
	Okyerekrom	2	Adansi South
	Sikama	3	Adansi South
Communities reporting 3 or more cases in quarter	Atuntuma	3	Atwima Nwabiagya
	Manfo	3	Ahafo Ano North
	Nfenebu	3	Ahafo Ano North
	Nshyieso	5	Asante Akim North
	Ananekrom	6	Asante Akim North
	Gyereso	3	Atwima Nwabiagya

c. Treatment Centres and Laboratory Confirmation

District	Treatment Centre	No of cases reported	# specimen taken/Collected
Obuasi Municipal	Avrilkeon Community Clinic	1	1 (100%)
Asante Akim North	Agogo Presby Hospital	27	27 (100%)
Ahafo Ano North	Tepa Govt Hospital	18	10 (55.6%)
Amansie East	Bekwai Govt Hospital	4	0
Adansi South	DHA	9	0
Atwima Nwabiagya	Nkawie Hospital	15	3 (20%)
Sekyere East	DHA	3	0
Total		77	

Central Region

b. Timeliness, Completeness and number of reports received

Regional Report was received late (thus after 15th April 2008)

No Nil reports were received.

Endemic districts which did not submit reports were:

- Gomoa,
- Assin South and
- Assin North

b. Communities Reporting

Indicator	Name of Community	No of cases	District
Communities Reporting BU the for the 1 st time	Akwamekrom	1	Gomoa
Communities reporting 3 or more cases in quarter	Abora	4	Upper Denkyira

c. Treatment Centres and Laboratory Confirmation

District	Treatment Centre	No of cases reported	# specimen taken/Collected
Upper Denkyira	Dunkwa Govt Hospital	15	15 (100%)
	St. John Community Clinic, Nkotumso	27	9 (33.3%)
	SDA Clinic, Dominase	4	0
Agona	Swedru Govt Hospital	1	0
Total		47	

Eastern Region

c. Timeliness, Completeness and number of reports received

Regional Report was received on time (thus before 15th April 2008)

No nil reports were received.

Endemic districts which did not submit reports were:

- Yilo Krobo
- Kwahu South
- Fanteakwa
- Asuogyaman
- Afram Plains

b. Communities Reporting

Indicator	Name of Community	No of cases	District
Communities Reporting BU the for the 1 st time	Asamankese	1	West Akim
Communities reporting 3 or more cases in quarter	Otukwadwo	3	Akwapim South

c. Treatment Centres and Laboratory Confirmation

District	Treatment Centre	No of cases reported	# specimen taken/Collected
Suhum Kraboa Coaltar	Akorabo Health Centre	1	0
	Asuboi Health Centre	9	4 (44.4%)
	Dokrochiwa Health Centre	1	0
	DHA	2	1 (50%)
West Akim	DHA	2	0
Akwapim North	Okrakwadwo	6	0
Akwapim South	Pakro Health Centre	9	0
Total		30	

Gt. Accra Region

d. Timeliness, Completeness and number of reports received

Regional Report was received late (thus after 15th April 2008)

No nil reports were received.

Endemic districts which did not submit reports were:

- Ga East

b. Communities Reporting

Indicator	Name of Community	No of cases	District
Communities Reporting BU the for the 1 st time	Nil	Nil	Nil
Communities reporting 3 or more cases in quarter	Amasaman	3	Ga west

c. Treatment Centres and Laboratory Confirmation

District	Treatment Centre	No of cases reported	# specimen taken/Collected
Ga West	Amasaman Health Centre	18	3
	Obom Health Centre	0	
Total		18	

Western Region

e. Timeliness, Completeness and number of reports received

Regional Report was received late (thus after 15th April 2008)

No nil reports were received.

Endemic districts which did not submit reports were:

- Juaboso
- Ahanta West
- Wassa West

*** An investigation report from Wassa Amenfi West was received. 18 suspected cases from 7 communities were recorded. Specimen was taken from 6 cases. **We await the laboratory results**

b. Communities Reporting

Indicator	Name of Community	No of cases	District
Communities Reporting BU for the 1 st time	Nil	Nil	Nil
Communities reporting 3 or more cases in quarter	Nil	Nil	Nil